

FLANGED TEE

712/1110-001

TEE W/FLANGED BRANCH, PN 16

Water Supply

Wastewater Treatment

Water Treatment

Dams, Reservoirs and Hydropower

Irrigation

AVK's range of fittings comprises a wide selection of variants with socket and flange connection. The fittings are made of ductile iron GJS-500-7 and are epoxy coated according to DIN 3476 and GSK specifications - internally and externally.

Use:

All flanged Tee type TT with flanged branch to EN 545 for water, waste water and neutral liquids to max. 70° C

Standards:

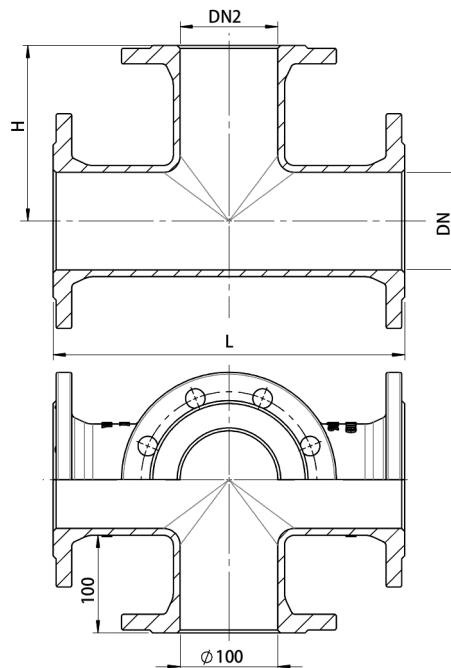
- EN 545
- Flange drilling to EN1092, PN16

Features:

- Ductile iron fitting to EN 545
- Body of GJS-500-7
- Epoxy coated to DIN 3476 and GSK internally and externally



The designs, materials, dimensions and specifications shown are subject to change without notice due to the continuous development of our product range.



Component list:

1. Fitting	Ductile Iron
------------	--------------

Components may be substituted with equivalent or higher class materials without prior notification.

Reference nos. and dimensions:

Reference no.	DN	DN2	L	H	Theoretical weight/kg
	mm	mm	mm	mm	
712-0100-11-101	100	100	360	180	22
712-0150-11-101	150	150	440	220	33
712-0152-11-101	150	100	440	210	31
712-0200-11-100	200	200	520	260	47
712-0200-11-101	200	200	520	260	47
712-0201-11-101	200	150	520	250	44
712-0203-11-100	200	100	520	240	41
712-0203-11-101	200	100	520	240	49
712-0250-11-100	250	250	700	350	75
712-0250-11-101	250	250	700	350	74
712-0251-11-100	250	200	700	325	69
712-0251-11-101	250	200	700	325	68
712-0252-11-100	250	150	700	300	79
712-0252-11-101	250	150	700	300	79
712-0254-11-100	250	100	700	275	74
712-0254-11-101	250	100	700	275	74
712-0300-11-100	300	300	800	400	103
712-0300-11-101	300	300	800	400	102
712-0301-11-100	300	250	800	375	116
712-0301-11-101	300	250	800	375	116
712-0302-11-100	300	200	800	350	110
712-0302-11-101	300	200	800	350	110
712-0303-11-100	300	150	800	325	106
712-0303-11-101	300	150	800	325	106
712-0305-11-100	300	100	800	300	101
712-0305-11-101	300	100	800	300	101
712-0400-11-100	400	400	900	450	156
712-0400-11-101	400	400	900	450	171
712-0402-11-100	400	300	900	450	145
712-0402-11-101	400	300	900	450	154

The designs, materials, dimensions and specifications shown are subject to change without notice due to the continuous development of our product range.

FLANGED TEE**712/1110-001****TEE W/FLANGED BRANCH, PN 16****Reference nos. and dimensions:**

Reference no.	DN	DN2	L	H	Theoretical weight/kg
	mm	mm	mm	mm	
712-0403-11-100	400	250	900	350	135
712-0403-11-101	400	250	900	350	144
712-0404-11-100	400	200	900	350	131
712-0404-11-101	400	200	900	350	141
712-0405-11-100	400	150	900	350	128
712-0405-11-101	400	150	900	350	139
712-0407-11-101	400	100	900	350	170
712-0500-11-100	500	500	1000	500	221
712-0500-11-101	500	500	1000	500	265
712-0502-11-100	500	400	1000	500	208
712-0502-11-101	500	400	1000	500	243
712-0504-11-100	500	300	1000	500	198
712-0504-11-101	500	300	1000	500	228
712-0505-11-100	500	250	1000	400	189
712-0505-11-101	500	250	1000	400	218
712-0506-11-100	500	200	1000	400	185
712-0506-11-101	500	200	1000	400	215
712-0507-11-100	500	150	1000	400	183
712-0507-11-101	500	150	1000	400	212
712-0509-11-100	500	100	1000	400	181
712-0509-11-101	500	100	1000	400	210
712-0600-11-100	600	600	1100	550	482
712-0600-11-101	600	600	1100	550	482
712-0603-11-100	600	400	1100	550	279
712-0603-11-101	600	400	1100	550	336
712-0605-11-100	600	300	1100	550	271
712-0605-11-101	600	300	1100	550	322
712-0607-11-100	600	200	1100	450	258
712-0607-11-101	600	200	1100	450	309
712-0610-11-100	600	100	1100	450	254
712-0610-11-101	600	100	1100	450	305
712-1000-11-101	1000	1000	1650	825	1115

The designs, materials, dimensions and specifications shown are subject to change without notice due to the continuous development of our product range.