

BLIND FLANGE

712/3810-001

PN 10/16

Water Supply

Wastewater Treatment

Water Treatment

Dams, Reservoirs and Hydropower

Irrigation

AVK's range of fittings comprises a wide selection of variants with socket and flange connection. The fittings are made of ductile iron GJS-500-7 and are epoxy coated according to DIN 3476 and GSK specifications - internally and externally.

Use:

Blind flange type X to EN 545 for water, waste water and neutral liquids to max. 70° C

Standards:

- EN 545
- Flange drilling to EN1092, PN10/16

Test/Approvals:

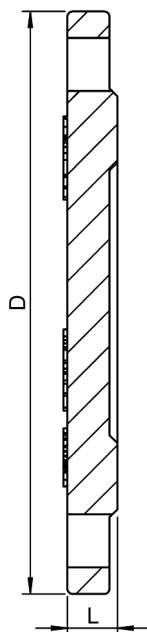
- Belgaqua approved material

Features:

- Ductile iron fitting to EN 545
- Body of GJS-500-7
- Epoxy coated to DIN 3476 and GSK internally and externally



The designs, materials, dimensions and specifications shown are subject to change without notice due to the continuous development of our product range.



Component list:

1. Fitting	Ductile Iron
------------	--------------

Components may be substituted with equivalent or higher class materials without prior notification.

Reference nos. and dimensions:

Reference no.	DN mm	Flange drilling	L mm	D mm	Theoretical weight/kg
712-0040-38-101	40	PN10/16	19	150	2.0
712-0050-38-101	50	PN10/16	19	165	2.4
712-0060-38-101	60	PN10/16	19	175	2.7
712-0060-38-103	60	PN10/16	19	175	3.0
712-0065-38-101	65	PN10/16	19	185	3.1
712-0070-38-101	60/65	PN10/16	19	185	3.0
712-0080-38-101	80	PN10/16	19	200	3.5
712-0100-38-101	100	PN10/16	19	220	4.3
712-0125-38-101	125	PN10/16	19	250	5.6
712-0150-38-101	150	PN10/16	19	285	7.2
712-0200-38-100	200	PN10	20	340	11
712-0200-38-101	200	PN16	20	340	11
712-0250-38-100	250	PN10	22	400	17
712-0250-38-101	250	PN16	22	400	17
712-0300-38-100	300	PN10	25	455	24
712-0300-38-101	300	PN16	25	455	24
712-0350-38-100	350	PN10	25	505	29
712-0350-38-101	350	PN16	27	520	34
712-0400-38-100	400	PN10	25	565	37
712-0400-38-101	400	PN16	28	580	45
712-0450-38-100	450	PN10	26	615	45
712-0450-38-101	450	PN16	30	640	59
712-0500-38-100	500	PN10	27	670	57
712-0500-38-101	500	PN16	32	715	78
712-0600-38-100	600	PN10	30	780	87
712-0600-38-101	600	PN16	36	840	124
712-1200-38-100	1200	PN10	45	1455	470

The designs, materials, dimensions and specifications shown are subject to change without notice due to the continuous development of our product range.