

BLIND FLANGE W/INTERNAL BSP

712/3910-010

BSP thread 1" - 1 1/2", PN 10/16

Water Supply

Wastewater Treatment

Water Treatment

Dams, Reservoirs and Hydropower

Irrigation

AVK's range of fittings comprises a wide selection of variants with socket and flange connection. The fittings are made of ductile iron GJS-500-7 and are epoxy coated according to DIN 3476 and GSK specifications - internally and externally.

Use:

Blind flange with internal BSP thread type XI to EN 545 for water, waste water and neutral liquids to max. 70° C

Standards:

- EN 545
- Flange drilling to EN1092, PN10/16

Test/Approvals:

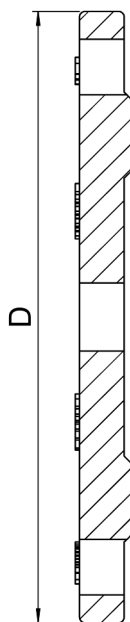
- Belgaqua approved material

Features:

- Ductile iron fitting to EN 545
- Body of GJS-500-7
- Epoxy coated to DIN 3476 and GSK internally and externally



The designs, materials, dimensions and specifications shown are subject to change without notice due to the continuous development of our product range.

BLIND FLANGE W/INTERNAL BSP**712/3910-010****BSP thread 1" - 1 1/2", PN 10/16****Reference nos. and dimensions:**

Reference no.	DN mm	Flange drilling	D mm	Theoretical weight/kg
712-0040-39-101010 (1)	40	PN10/16	150	1.9
712-0040-39-101012 (2)	40	PN10/16	150	1.9
712-0040-39-101015 (3)	40	PN10/16	150	1.9
712-0050-39-101010 (1)	50	PN10/16	165	2.4
712-0050-39-101012 (2)	50	PN10/16	165	2.4
712-0050-39-101015 (3)	50	PN10/16	165	2.4
712-0060-39-101010 (1)	60	PN10/16	175	2.6
712-0060-39-101012 (2)	60	PN10/16	175	2.6
712-0060-39-101015 (3)	60	PN10/16	175	2.6
712-0065-39-101010 (1)	65	PN10/16	185	3.0
712-0065-39-101012 (2)	65	PN10/16	185	3.0
712-0065-39-101015 (3)	65	PN10/16	185	3.0
712-0080-39-101010 (1)	80	PN10/16	200	3.4
712-0080-39-101012 (2)	80	PN10/16	200	3.4
712-0080-39-101015 (3)	80	PN10/16	200	3.4
712-0100-39-101010 (1)	100	PN10/16	220	4.2
712-0100-39-101012 (2)	100	PN10/16	220	4.2
712-0100-39-101015 (3)	100	PN10/16	220	4.2
712-0125-39-101010 (1)	125	PN10/16	250	5.5
712-0125-39-101012 (2)	125	PN10/16	250	5.5
712-0125-39-101015 (3)	125	PN10/16	250	5.5
712-0150-39-101010 (1)	150	PN10/16	285	7.1
712-0150-39-101012 (2)	150	PN10/16	285	7.1
712-0150-39-101015 (3)	150	PN10/16	285	7.1
712-0200-39-100010 (1)	200	PN10	340	11
712-0200-39-100012 (2)	200	PN10	340	11
712-0200-39-100015 (3)	200	PN10	340	11
712-0200-39-101010 (1)	200	PN16	340	11
712-0200-39-101012 (2)	200	PN16	340	11
712-0200-39-101015 (3)	200	PN16	340	11
712-0250-39-100010 (1)	250	PN10	400	16
712-0250-39-100012 (2)	250	PN10	400	16
712-0250-39-100015 (3)	250	PN10	400	16
712-0250-39-101010 (1)	250	PN16	400	16

The designs, materials, dimensions and specifications shown are subject to change without notice due to the continuous development of our product range.

BLIND FLANGE W/INTERNAL BSP**712/3910-010****BSP thread 1" - 1 1/2", PN 10/16****Reference nos. and dimensions:**

Reference no.	DN mm	Flange drilling	D mm	Theoretical weight/kg
712-0250-39-101012 (2)	250	PN16	400	17
712-0250-39-101015 (3)	250	PN16	400	17
712-0300-39-100010 (1)	300	PN10	455	23
712-0300-39-100012 (2)	300	PN10	455	23
712-0300-39-100015 (3)	300	PN10	455	23
712-0300-39-101010 (1)	300	PN16	455	24
712-0300-39-101012 (2)	300	PN16	455	23
712-0300-39-101015 (3)	300	PN16	455	24
712-0400-39-100010 (1)	400	PN10	565	44
712-0400-39-100012 (2)	400	PN10	565	44
712-0400-39-100015 (3)	400	PN10	565	44
712-0400-39-101010 (1)	400	PN16	580	44
712-0400-39-101012 (2)	400	PN16	580	44
712-0400-39-101015 (3)	400	PN16	580	44
712-0500-39-100010 (1)	500	PN10	670	77
712-0500-39-100012 (2)	500	PN10	670	77
712-0500-39-100015 (3)	500	PN10	670	77
712-0500-39-101010 (1)	500	PN16	715	77
712-0500-39-101012 (2)	500	PN16	715	77
712-0500-39-101015 (3)	500	PN16	715	77
712-0600-39-100010 (1)	600	PN10	780	123
712-0600-39-100012 (2)	600	PN10	780	123
712-0600-39-100015 (3)	600	PN10	780	121
712-0600-39-101010 (1)	600	PN16	840	121
712-0600-39-101012 (2)	600	PN16	840	121
712-0600-39-101015 (3)	600	PN16	840	121

(1) BSP thread 1" (26x34)
(2) BSP thread 1½" (40x49)
(3) BSP thread 1 1/4" (33x42)