

FLANGED PIPE

712/4010-001

100 MM, PN 10/16

Water Supply

Wastewater Treatment

Water Treatment

Dams, Reservoirs and Hydropower

Irrigation

AVK's range of fittings comprises a wide selection of variants with socket and flange connection. The fittings are made of ductile iron GJS-500-7 and are epoxy coated according to DIN 3476 and GSK specifications - internally and externally.

Use:

Double flange pipe type FF to EN 545 for water, waste water and neutral liquids to max. 70° C

Standards:

- EN 545
- Flange drilling to EN1092, PN10/16

Test/Approvals:

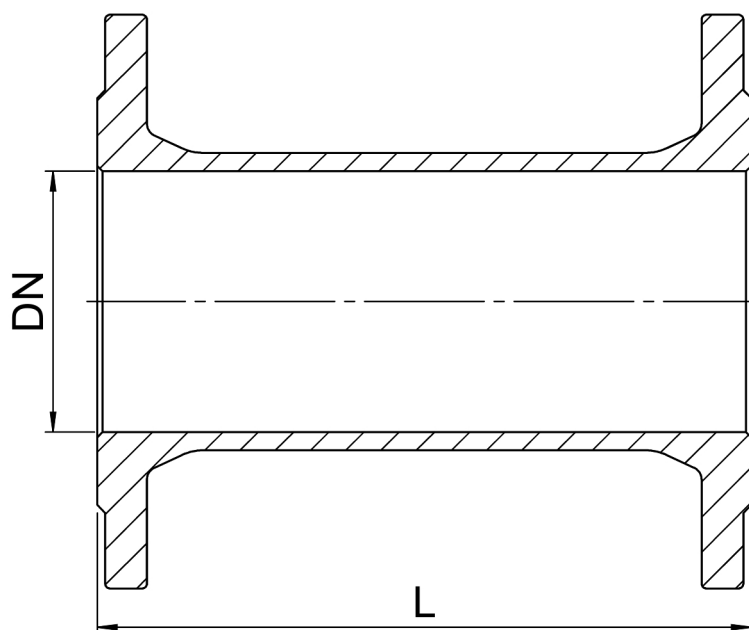
- Belgaqua approved material

Features:

- Ductile iron fitting to EN 545
- Body of GJS-500-7
- Epoxy coated to DIN 3476 and GSK internally and externally



The designs, materials, dimensions and specifications shown are subject to change without notice due to the continuous development of our product range.

FLANGED PIPE**100 MM, PN 10/16****712/4010-001****Component list:**

1. Fitting	Ductile Iron
------------	--------------

Components may be substituted with equivalent or higher class materials without prior notification.

Reference nos. and dimensions:

Reference no.	DN mm	Flange drilling	L mm	Theoretical weight/kg
712-0040-40-101	40	PN10/16	100	4.3
712-0050-40-101	50	PN10/16	100	5.1
712-0060-40-101	60	PN10/16	100	5.7
712-0065-40-101	65	PN10/16	100	6.3
712-0080-40-101	80	PN10/16	100	7.0
712-0100-40-101	100	PN10/16	100	8.2
712-0125-40-101	125	PN10/16	100	10
712-0150-40-101	150	PN10/16	100	12
712-0200-40-100	200	PN10	100	18
712-0200-40-101	200	PN16	100	17
712-0250-40-100	250	PN10	100	24
712-0250-40-101	250	PN16	100	24
712-0300-40-100	300	PN10	100	33
712-0300-40-101	300	PN16	100	33
712-0350-40-100	350	PN10	100	36
712-0350-40-101	350	PN16	100	42
712-0400-40-100	400	PN10	100	42
712-0400-40-101	400	PN16	100	50
712-0450-40-100	450	PN10	100	49
712-0450-40-101	450	PN16	100	66
712-0500-40-100	500	PN10	100	57
712-0500-40-101	500	PN16	100	85
712-0600-40-100	600	PN10	100	77
712-0600-40-101	600	PN16	100	125

The designs, materials, dimensions and specifications shown are subject to change without notice due to the continuous development of our product range.