

FLANGED PIPE

712/5110-001

800 MM, PN 10/16

Water Supply

Wastewater Treatment

Water Treatment

Dams, Reservoirs and Hydropower

Irrigation

AVK's range of fittings comprises a wide selection of variants with socket and flange connection. The fittings are made of ductile iron GJS-500-7 and are epoxy coated according to DIN 3476 and GSK specifications - internally and externally.

Use:

Double flange pipe type FF for water, waste water and neutral liquids to max. 70° C

Standards:

- EN 545
- Flange drilling to EN1092, PN10/16

Features:

- Ductile iron fitting to EN 545
- Body of GJS-500-7
- Epoxy coated to DIN 3476 and GSK internally and externally

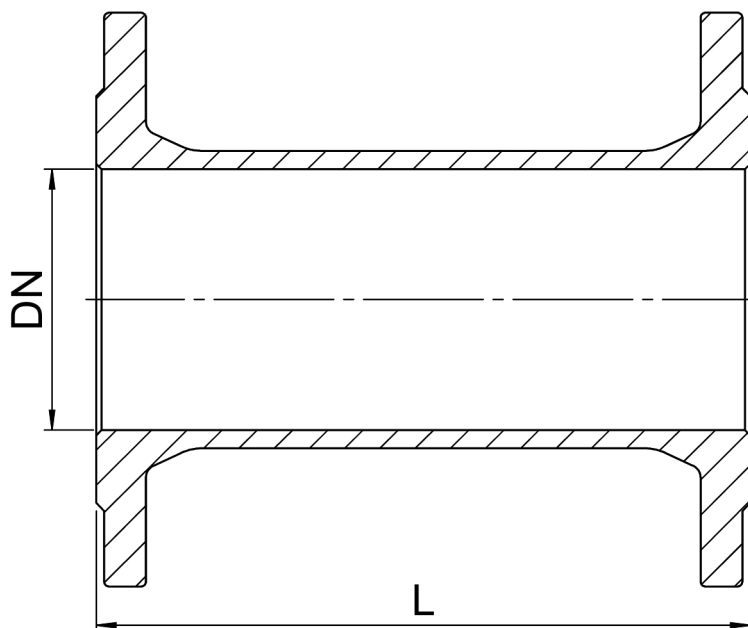


The designs, materials, dimensions and specifications shown are subject to change without notice due to the continuous development of our product range.

FLANGED PIPE

800 MM, PN 10/16

712/5110-001

**Component list:**

1. Fitting	Ductile Iron
------------	--------------

Components may be substituted with equivalent or higher class materials without prior notification.

Reference nos. and dimensions:

Reference no.	DN mm	Flange drilling	L mm	Theoretical weight/kg
712-0040-51-101	40	PN10/16	800	9.0
712-0050-51-101	50	PN10/16	800	11
712-0060-51-101	60	PN10/16	800	12
712-0065-51-101	65	PN10/16	800	14
712-0080-51-101	80	PN10/16	800	16
712-0100-51-101	100	PN10/16	800	20
712-0125-51-101	125	PN10/16	800	25
712-0150-51-101	150	PN16	800	30
712-0200-51-100	200	PN10	800	42
712-0200-51-101	200	PN16	800	41
712-0250-51-100	250	PN10	800	57
712-0250-51-101	250	PN16	800	56
712-0300-51-100	300	PN10	800	73
712-0300-51-101	300	PN16	800	72
712-0350-51-100	350	PN10	800	90
712-0350-51-101	350	PN16	800	96
712-0400-51-100	400	PN10	800	111
712-0400-51-101	400	PN16	800	118
712-0450-51-100	450	PN10	800	128
712-0450-51-101	450	PN16	800	150
712-0500-51-100	500	PN10	800	146
712-0500-51-101	500	PN16	800	176
712-0600-51-100	600	PN10	800	196
712-0600-51-101	600	PN16	800	247

The designs, materials, dimensions and specifications shown are subject to change without notice due to the continuous development of our product range.