

# DUCKFOOT BEND

## FLANGED, PN 10/16

712/7010-001

Water Supply

Wastewater Treatment

Water Treatment

Dams, Reservoirs and Hydropower

Irrigation

AVK's range of fittings comprises a wide selection of variants with socket and flange connection. The fittings are made of ductile iron GJS-500-7 and are epoxy coated according to DIN 3476 and GSK specifications - internally and externally.

### Use:

Double flanged duckfoot bend type N to EN 545 for water, waste water and neutral liquids to max. 70° C

### Standards:

- EN 545
- Flange drilling to EN1092, PN10/16

### Test/Approvals:

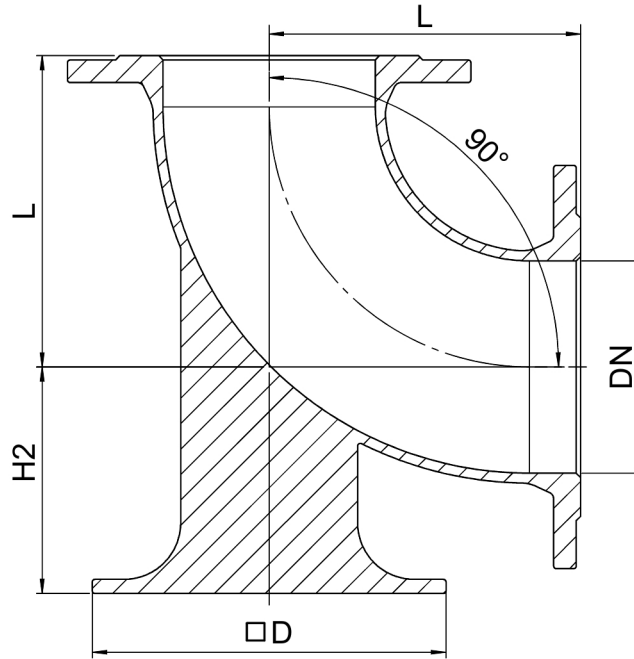
- Belgaqua approved material

### Features:

- Ductile iron fitting to EN 545
- Body of GJS-500-7
- Epoxy coated to DIN 3476 and GSK internally and externally



The designs, materials, dimensions and specifications shown are subject to change without notice due to the continuous development of our product range.



**Component list:**

1. Fitting	Ductile Iron
------------	--------------

Components may be substituted with equivalent or higher class materials without prior notification.

**Reference nos. and dimensions:**

Reference no.	DN mm	Flange drilling	L mm	D mm	H2 mm	Theoretical weight/kg
712-0080-70-101	80	PN10/16	165	180	110	12
712-0100-70-101	100	PN10/16	180	200	125	15
712-0150-70-101	150	PN10/16	220	250	160	25
712-0200-70-100	200	PN10	260	300	190	52
712-0200-70-101	200	PN16	260	300	190	52
712-0250-70-100	250	PN10	350	350	225	84
712-0250-70-101	250	PN16	350	350	225	84
712-0300-70-100	300	PN10	400	400	255	119
712-0300-70-101	300	PN16	400	400	255	119
712-0350-70-100	350	PN10	450	450	290	112
712-0350-70-101	350	PN16	450	450	290	120
712-0400-70-100	400	PN10	500	500	320	148
712-0400-70-101	400	PN16	500	500	320	159
712-0450-70-100	450	PN10	550	550	355	189
712-0450-70-101	450	PN16	550	550	355	211
712-0500-70-100	500	PN10	600	600	385	229
712-0500-70-101	500	PN16	600	600	385	259
712-0600-70-100	600	PN10	700	700	450	341
712-0600-70-101	600	PN16	700	700	450	393