

## FLANGE/SPIGOT

712/7513-001

PN 10/16

Water Supply

Wastewater Treatment

Water Treatment

Dams, Reservoirs and Hydropower

Irrigation

AVK's range of fittings comprises a wide selection of variants with socket and flange connection. The fittings are made of ductile iron GJS-500-7 and are epoxy coated according to DIN 3476 and GSK specifications - internally and externally.

### Use:

Flange spigot piece type F to EN 545 for water, waste water and neutral liquids to max. 70° C

### Standards:

- EN 545
- Flange drilling to EN1092, PN10/16

### Test/Approvals:

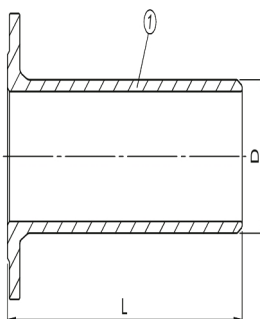
- Belgaqua approved material

### Features:

- Ductile iron fitting to EN 545
- Body of GJS-500-7
- Epoxy coated to DIN 3476 and GSK internally and externally



The designs, materials, dimensions and specifications shown are subject to change without notice due to the continuous development of our product range.



**Component list:**

1. Body	Ductile Iron
---------	--------------

Components may be substituted with equivalent or higher class materials without prior notification.

**Reference nos. and dimensions:**

Reference no.	DN mm	Flange drilling	L mm	D mm	Theoretical weight/kg
712-0040-75-131	40	PN10/16	335	56	4.6
712-0050-75-131	50	PN10/16	340	66	5.6
712-0065-75-131	65	PN10/16	345	82	7.3
712-0080-75-131	80	PN10/16	350	98	7.7
712-0100-75-131	100	PN10/16	360	118	11
712-0125-75-131	125	PN16	370	144	14
712-0150-75-131	150	PN10/16	380	170	18
712-0200-75-130	200	PN10	400	222	27
712-0200-75-131	200	PN16	400	222	27
712-0250-75-130	250	PN10	420	274	38
712-0250-75-131	250	PN16	420	274	38
712-0300-75-130	300	PN10	440	326	51
712-0300-75-131	300	PN16	440	326	51
712-0350-75-130	350	PN10	460	378	65
712-0350-75-131	350	PN16	460	378	68
712-0400-75-130	400	PN10	480	429	79
712-0400-75-131	400	PN16	480	429	79
712-0500-75-130	500	PN10	520	532	115
712-0500-75-131	500	PN16	520	532	129
712-0600-75-130	600	PN10	560	635	162
712-0600-75-131	600	PN16	560	635	187