

## DOUBLE ECCENTRIC BUTTERFLY VALVE, PN10/16

756/100-681

Integral seat, IP67 gearbox, internal enamel, DN700-800

### Water Supply

AVK double eccentric butterfly valves are designed with tilted disc for easy operation. The disc seal is made of AVK's drinking water approved EPDM rubber featuring an excellent compression set and thus ability to regain its original shape. The high quality GSK approved epoxy coating and the corrosion protected shaft end zones ensure high durability. The valves are suitable for bi-directional application.

#### Product description:

Double eccentric butterfly valve, internal enamel, with integral seat and IP67 gearbox w/handwheel and position indicator, for drinking water and neutral liquids to max. 70°C

#### Standards:

- Designed according to EN 593
- Face-to-face dimension according to EN 558 Table 2 Basic Series 14
- Standard flange drilling to EN1092-2 (ISO 7005-2), PN10/16

#### Test/Approvals:

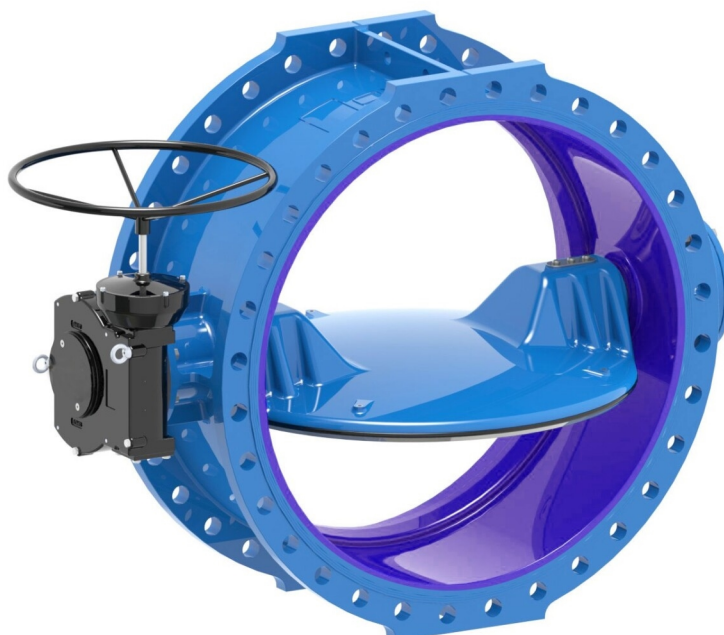
- Hydraulic test according to EN 1074-1 and 2 / EN 12266

#### Features:

- Machined and enamel coated ductile iron seat integrated in the body
- The double eccentric design combined with a tilted disc allows release of seal compression after only few degrees of opening resulting in low operating torque
- Disc firmly fixed to the shaft to prevent fluttering and a slight tilt allows for precise adjustment of the closed position
- Disc seal profile and rubber quality ensure low closing torque
- All rubber parts are drinking water approved by multiple institutes
- Fasteners in stainless steel A2
- Stainless steel shaft and seal retainer ring
- All threaded connections are sealed with O-rings for protection against medium and environment
- Radial bearings in self-lubricating PTFE/bronze composite
- Shaft ends: DN≤600: Fitted with an end cover that seals the disc interior against corrosion. DN≥700: Fully encapsulated in the disc and fixed with O-ring sealed dowels held in place with a security plate. Key and keyway as backup
- Replaceable shaft seals with two EPDM O-rings and an NBR gasket protecting against contamination from outside
- Body and disc of ductile iron. Coating of disc and body externally: Fusion bonded epoxy coating 250µm RAL 5017 in compliance with DIN 3476 part 1 and EN 14901, approved by GSK and WRAS-DVGW/W270/UBA. Coating of body internally: Enamel coating in compliance with DIN51178, EN ISO 11177 and DEV
- IP67 Rotork gear with position indicator, operated by handwheel. Coated black RAL9005, 50-60µm. Input shaft, bolts and nuts in stainless steel AISI 303

#### Accessories:

Dismantling joint and flange adaptor

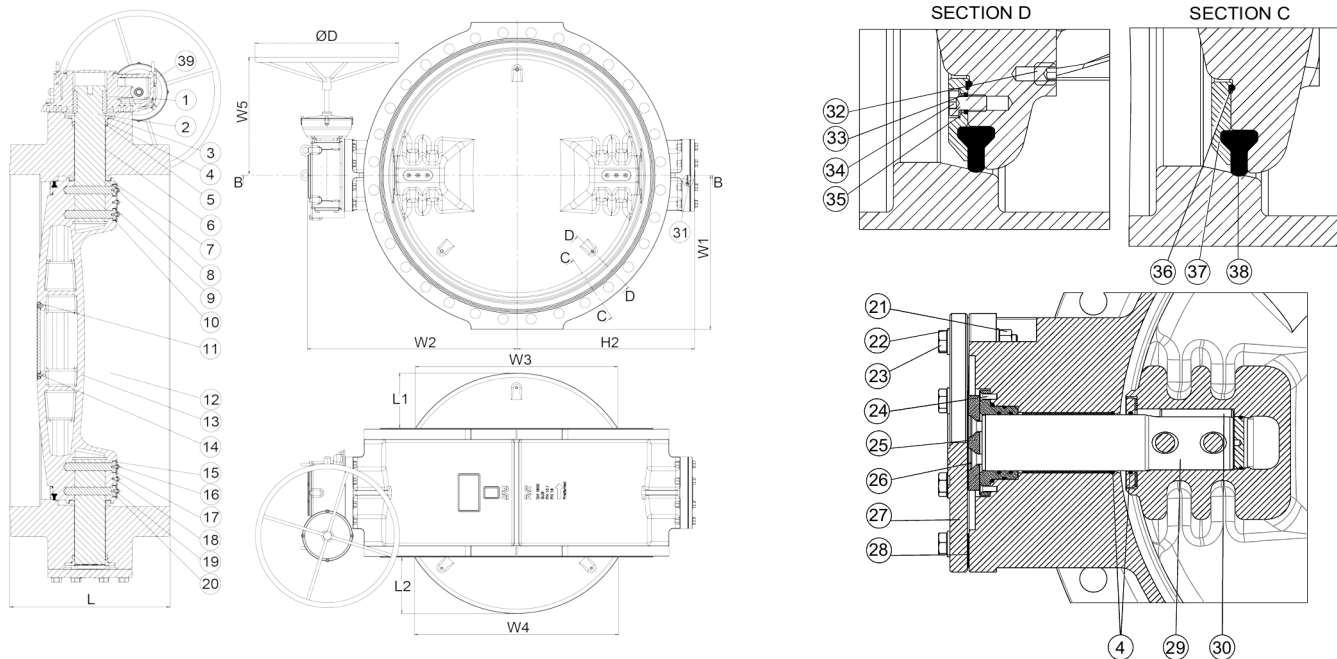


The designs, materials, dimensions and specifications shown are subject to change without notice due to the continuous development of our product range.

# DOUBLE ECCENTRIC BUTTERFLY VALVE, PN10/16

756/100-681

Integral seat, IP67 gearbox, internal enamel, DN700-800



## Component list:

|                             |                                 |                        |                                 |
|-----------------------------|---------------------------------|------------------------|---------------------------------|
| 1. Key                      | Stainless steel A2              | 21. Nut                | Stainless steel A2              |
| 2. Valve shaft              | Stainless steel 431             | 22. Washer             | Stainless steel A2              |
| 3. Seal housing             | Bronze                          | 23. Screw              | Stainless steel A2              |
| 4. O-ring                   | EPDM rubber                     | 24. Screw              | Stainless steel A2              |
| 5. O-ring                   | EPDM rubber                     | 25. Thrust bearing     | Bronze                          |
| 6. Self-lubricating bearing | Bronze / PTFE composite         | 26. Screw              | Stainless steel A2              |
| 7. Disc cover               | Stainless steel                 | 27. End plate          | Ductile iron GJS-500-7 (GGG-50) |
| 8. Disc cover gasket        | EPDM rubber                     | 28. Gasket             | EPDM rubber                     |
| 9. O-ring                   | EPDM rubber                     | 29. Stub shaft         | Stainless steel 431             |
| 10. Dowel                   | Stainless steel A2              | 30. Safety key         | Stainless steel A2              |
| 11. O-ring                  | EPDM rubber                     | 31. Screw              | Stainless steel A2              |
| 12. Body                    | Ductile iron GJS-500-7 (GGG-50) | 32. Screw              | Stainless steel A2              |
| 13. Disc                    | Ductile iron GJS-500-7 (GGG-50) | 33. O-ring             | EPDM rubber                     |
| 14. Screw                   | Stainless steel A2              | 34. Bolt               | Stainless steel A2              |
| 15. Security plate          | Stainless steel                 | 35. Washer             | Stainless steel A2              |
| 16. Screw                   | Stainless steel A2              | 36. O-ring             | EPDM rubber                     |
| 17. O-ring                  | EPDM rubber                     | 37. Seal retainer ring | Stainless steel                 |
| 18. Spring washer           | Stainless steel A2              | 38. Disc seal          | EPDM rubber                     |
| 19. O-ring                  | EPDM rubber                     | 39. Gearbox            | Cast iron                       |
| 20. Washer                  | Zinc                            |                        |                                 |

Components may be substituted with equivalent or higher class materials without prior notification.

**DOUBLE ECCENTRIC BUTTERFLY VALVE, PN10/16****756/100-681****Integral seat, IP67 gearbox, internal enamel, DN700-800****Reference nos. and dimensions:**

| AVK ref. no.     | DN<br>mm | Flange<br>drilling | D<br>mm | L<br>mm | L1<br>mm | L2<br>mm | H2<br>mm | W1<br>mm | W2<br>mm | W3<br>mm | W4<br>mm | W5<br>mm | Theoretical<br>weight/kg |
|------------------|----------|--------------------|---------|---------|----------|----------|----------|----------|----------|----------|----------|----------|--------------------------|
| 756-0700-1-04100 | 700      | PN10               | 600     | 430     | 127      | 133      | 550      | 448      | 641      | 533      | 543      | 457      | 444                      |
| 756-0700-1-14100 | 700      | PN16               | 600     | 430     | 127      | 133      | 550      | 448      | 641      | 533      | 543      | 457      | 517                      |
| 756-0800-1-04100 | 800      | PN10               | 600     | 470     | 156      | 162      | 620      | 508      | 711      | 627      | 636      | 457      | 592                      |
| 756-0800-1-14100 | 800      | PN16               | 600     | 470     | 156      | 162      | 620      | 508      | 711      | 627      | 636      | 457      | 663                      |